

# Tubular enclosure - Versatile

Cabinet tubulaire - Versatile  
*Locutorio tubular - Versátil*

# J-070

Due to its elegant appearance, this unit is ideal for prestige locations such as airports, banks, hotel lobbies etc. However, due to its robust characteristics, it is equally at home in an outdoor environment. Its versatile mounting plate feature allows the phone to be mounted at different heights giving access to all.

Cabinet élégant aux lignes sobres pour endroits achalandés tels que aéroports, centres commerciaux et halls d'hôtels. Solide, il s'installe aussi bien dehors qu'à l'intérieur. Grâce à la conception pratique de la plaque d'ancrage, le support de l'appareil téléphonique peut être fixé à la hauteur désirée pour un accès facile.

*El nivel de calidad de los productos es una prioridad para Jaro y hace el objeto de una evaluación constante.*

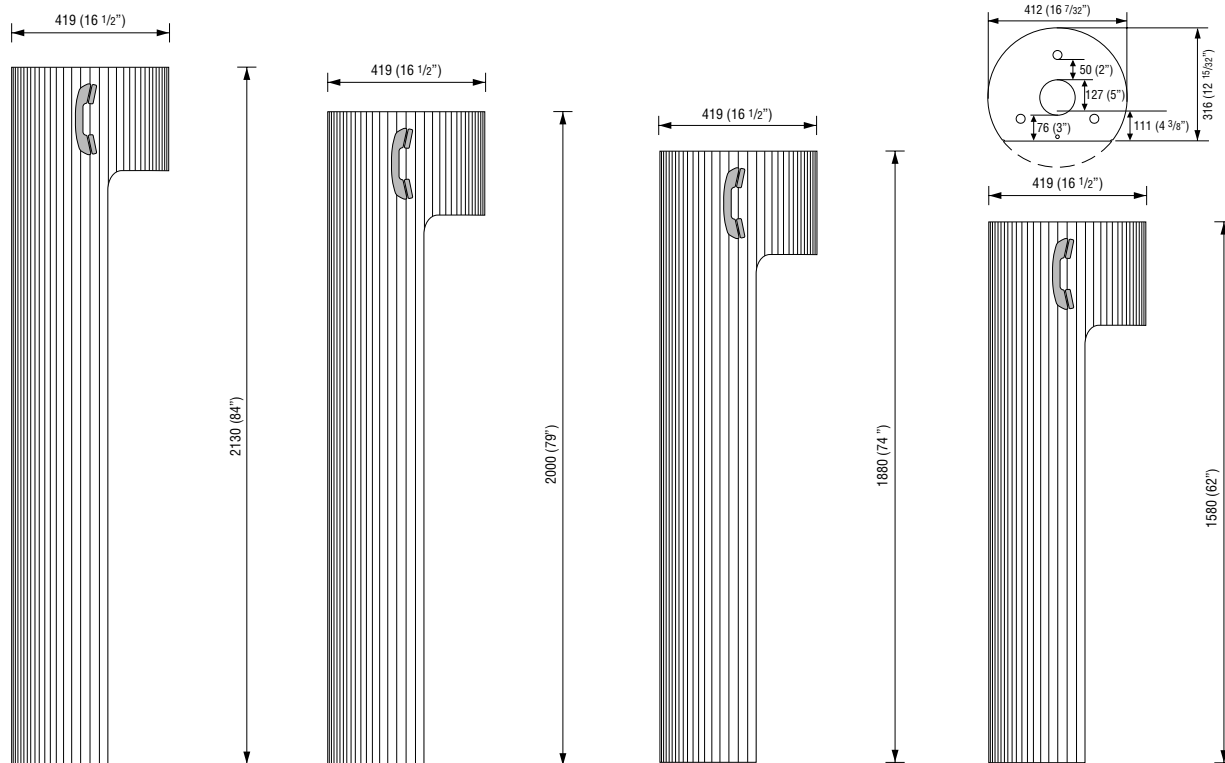


# Tubular enclosure - Versatile

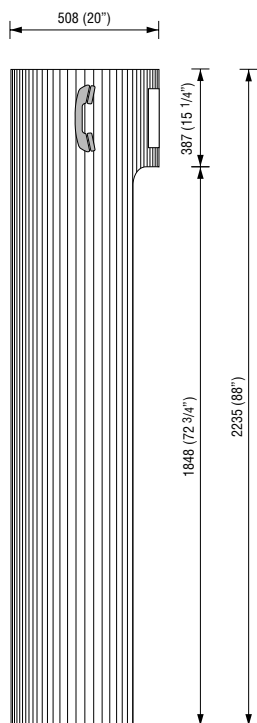
Cabinet tubulaire - Versatile

Locutorio tubular - Versátil

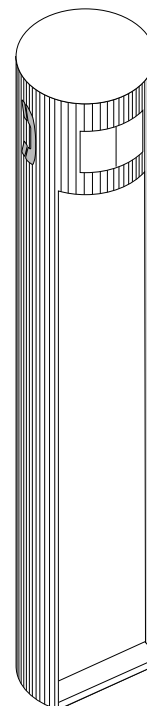
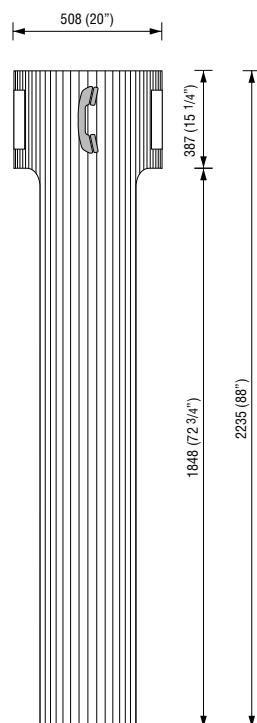
## J-070



## J-072



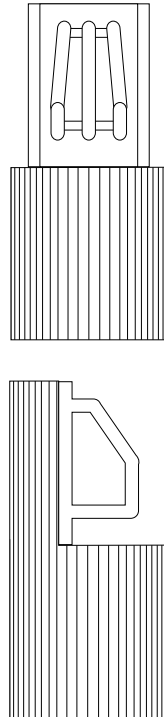
## J-072 DF



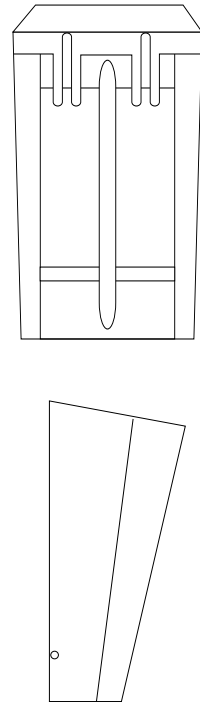
**J-072**



**J-070-36 (R-RD)**



**J-070-10/20**



**J-072 DF**



**J-070 1/2**



# Tubular enclosure - Versatile

Cabinet tubulaire - Versatile

Locutorio tubular - Versátil

# J-070

## Colours / Couleurs / Colores

### A

**Aluminum**  
Aluminium  
Aluminio



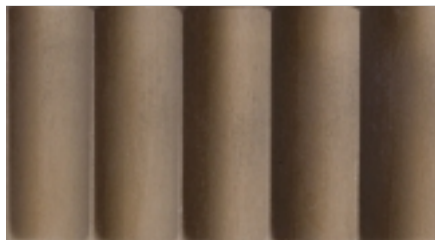
### P

**Champagne**  
Champagne  
Champaña



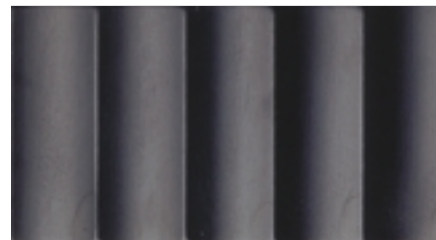
### B

**Bronze**  
Bronze  
Bronce



### N

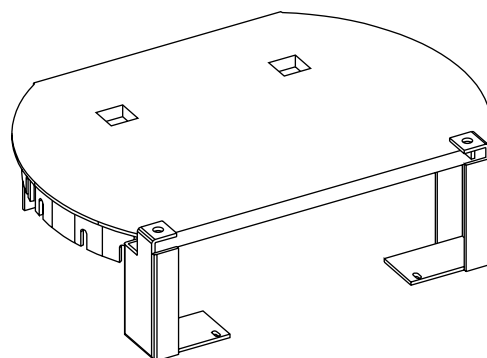
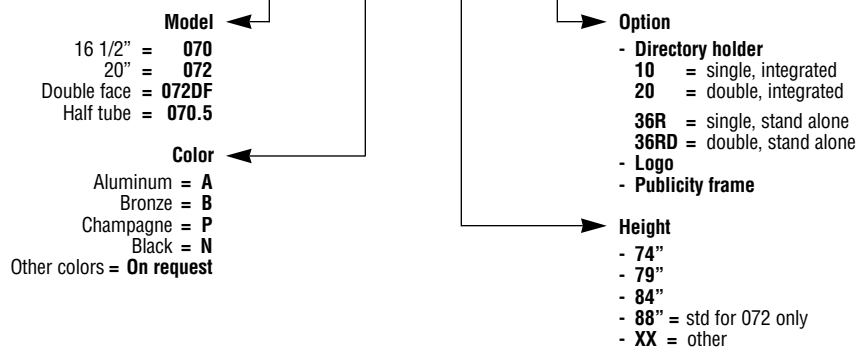
**Black**  
Noir  
Negro



## To order

Pour commander / Para encargar

**J-070**



### OPTIONS / Opciones:

- Shelf for TDD in J-070
- Tablette pour TDD dans J-070
- Tableta para TDD en J-070